

sitting-room, where the all-sustaining cup of tea was served to us on that enjoyable and memorable afternoon. Comfort and beauty everywhere. Lattice windows with orange curtains and green paint, and rugs and carpets in delicious harmony of colour, and then the sun shining through and touching up and warming everything, gives a thrill to one's artistic sense, and makes one feel the truth of the assertion that our natures are more influenced by colour than we are ourselves aware of. But then Sister Bernardine, the "Managing Director," has the artistic temperament, and cannot tolerate inharmony anywhere in anything.

3. *St. Mary's Nursing Home*, which was opened on October 8th of last year, is the last word in comfort and hygienic and sanitary perfection.

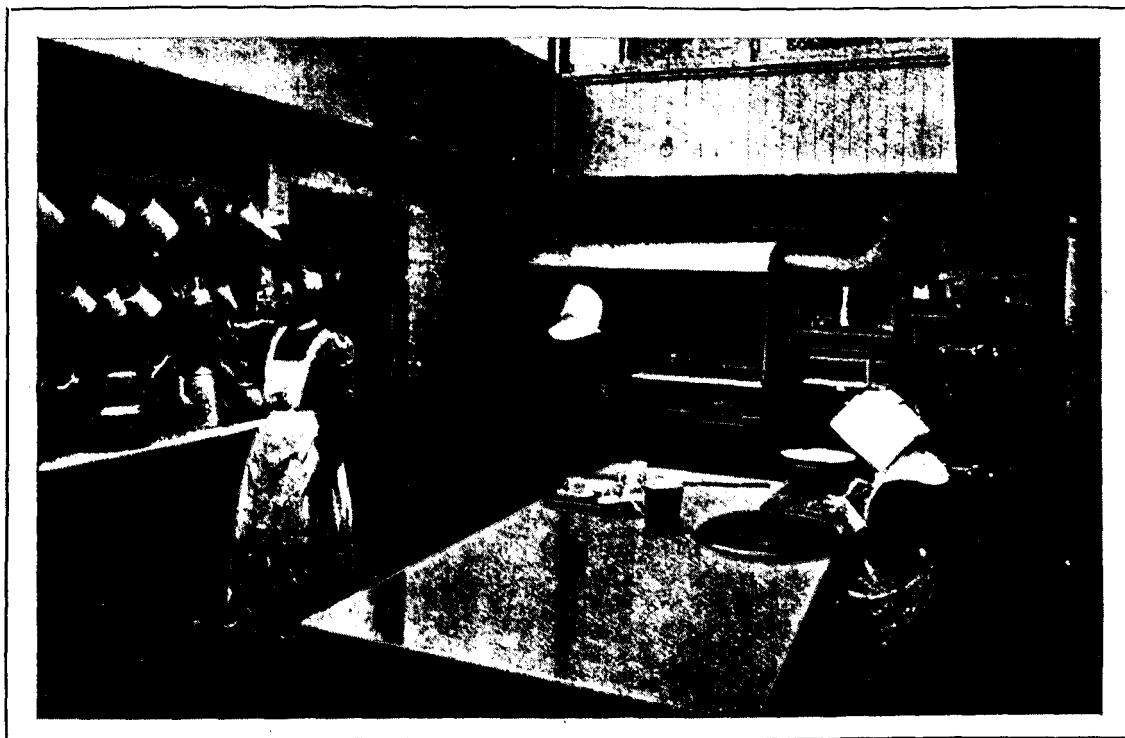
nothing to be desired in the way of baths and wash sink.

4. The building heated throughout by Messrs. Haden & Sons, of Kingsway, eighty-six radiators installed, and a large furnace room excavated.

5. The kitchen department entirely re-modelled and tiled, and fitted with Clements & Jeakes' gas-cooking apparatus.

6. Electric light introduced everywhere, &c.

7. Last, but not least, *St. Mary's Nursing Home*, which occupies the entire length of the upper portion of the building. This has been remodelled, and now forms, in fact and purpose, a self-contained flat, quite apart from the rest of the building, with outer doors to shut out sounds and complete the seclusion. Here there is accommodation for six patients. Five out of



THE KITCHEN, ST. MARY'S HOME, CHISWICK.

When the East Grinstead Sisters a few years ago took possession of this comprehensive building it was found, by the march of time and the exigencies of modern sanitary requirements, that considerable alterations were necessary. These imperative improvements were extended to every department of the establishment. The science of hospital structure being of interest to nurses, it may be as well to give some of the improvements in detail.

1. The whole drainage system renewed.
2. Two new sanitary blocks, white tiled and furnished with fittings of Shanks' Patent and leadless glaze combined.
3. A complete hot-water service, leaving

the six rooms have a south aspect. There is no stereotyped plan of institution furnishing. Each room is furnished differently, and with excellent taste.

It is the aim and object of Sister Bernardine, who is a practical idealist, to give the patients the fullest value for their money. "We have nothing but the best; they *must* have the best," she explained, as she produced from a cupboard some delicious soft fleecy merino blankets. Would that such a principle ruled in all nursing homes. If this were so, we should not so frequently hear "the exceeding bitter cry" against them in general. For this reason it is unfortunately necessary to make the following statement

[previous page](#)

[next page](#)